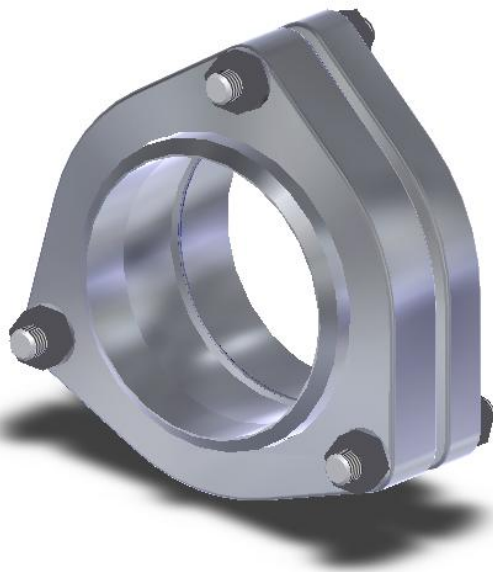


Taper-Lok 3-Bolt Quick Assembly Swivel (QAS)

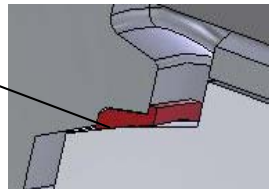


Female Weldneck

Seal Ring

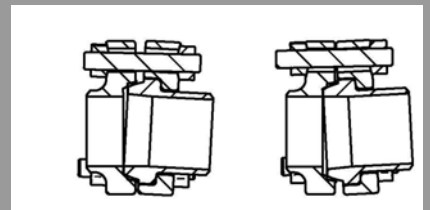
Male Fitting

Swivel



Taper-Lok 3-Bolt Quick Assembly Swivel (QAS) is one of several pressure-energized connectors engineered to provide specific solutions in specialized applications.

QAS has a maximum angular misalignment of 3°, thereby providing flexibility in assembly of lines during installations. The smaller, light-weight 3-bolt connection is quick to assemble and provides a high-integrity seal under extreme conditions and environments.



QAS is primarily used on frac trucks used in well stimulation systems. The product helped reduce the time for each assembly connection by over 75% as compared to conventional tack welding of lines.



Taper-Lok... recognized as a world leader in high-pressure leak-free flange technology.

